

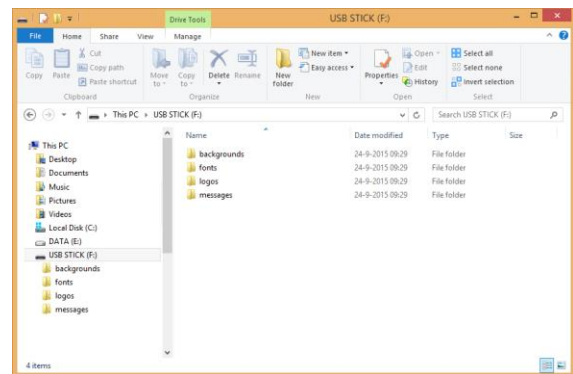
# Set up new fonts

For this step you need your own computer and a USB stick.

## STEP 1

On your computer:

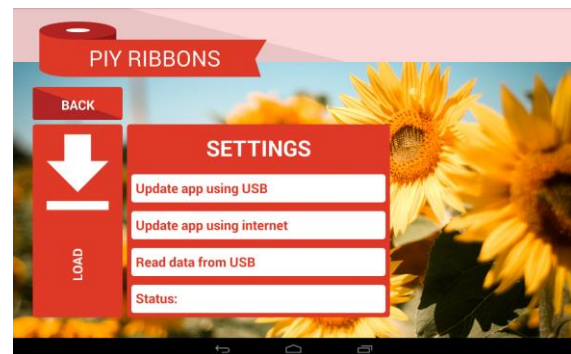
- On the USB stick, create a folder and call it 'fonts'
- Place the fonts you want to use on the tablet in this folder



## STEP 2

On the ribbontablet:

- Insert the USB in the hub
- Open the configuration screen in the app
- Go to settings and choose 'read data from USB stick'
- The fonts are now available
- Return to the configuration screen
- Click GENERAL and choose 'Default font'



After setting this, your desired font will be used in the app.

